



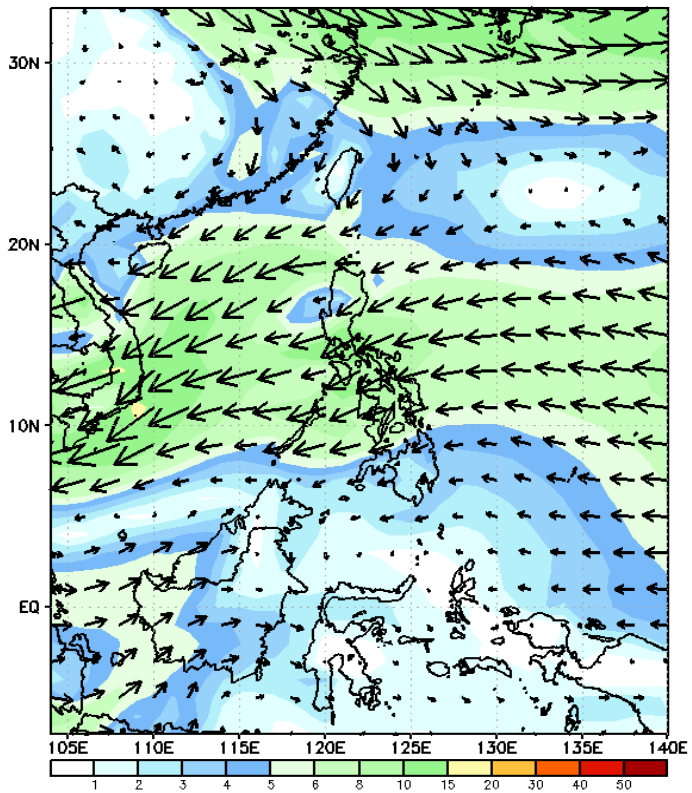
# Week 1 & Week 2 Forecast for the Philippines using GEFS Model



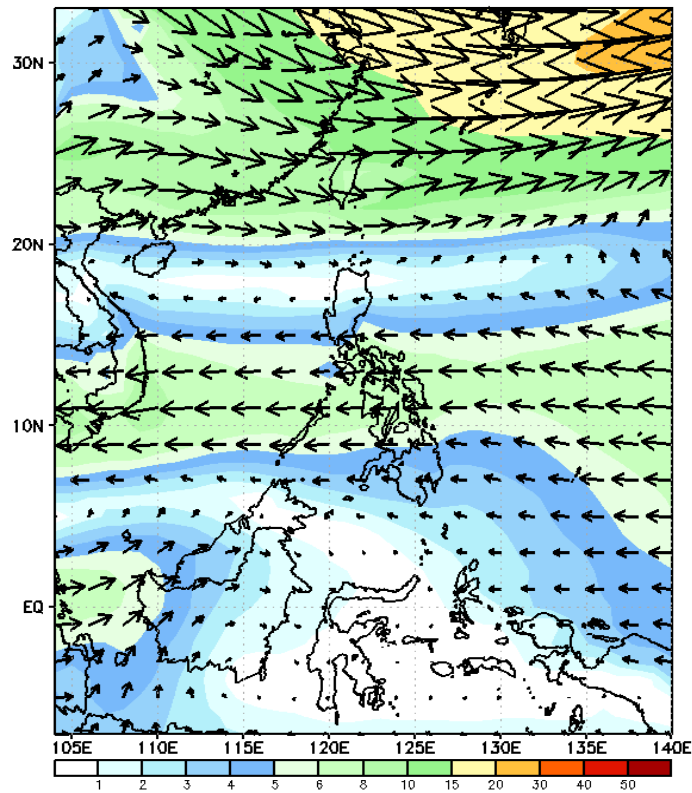
# GEFS Week-1 Wind Forecasts:

Week 1: Nov 25- Dec 01, 2024

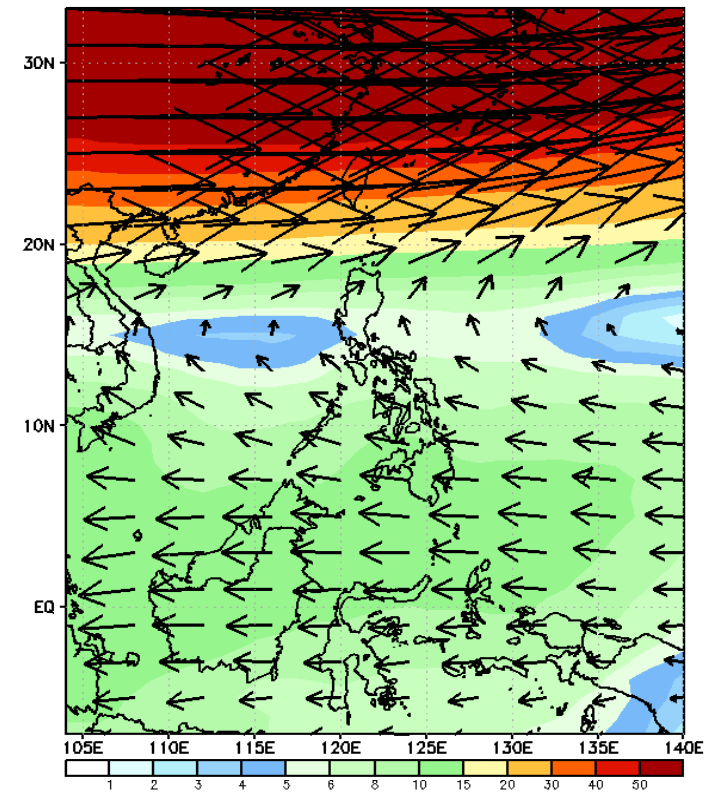
GEFS Week-1 850-hPa Wind Total  
Valid: 20241127 - 20241203



GEFS Week-1 700-hPa Wind Total  
Valid: 20241127 - 20241203

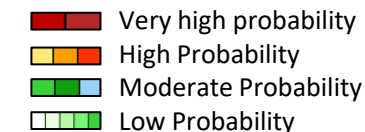


GEFS Week-1 200-hPa Wind Total  
Valid: 20241127 - 20241203



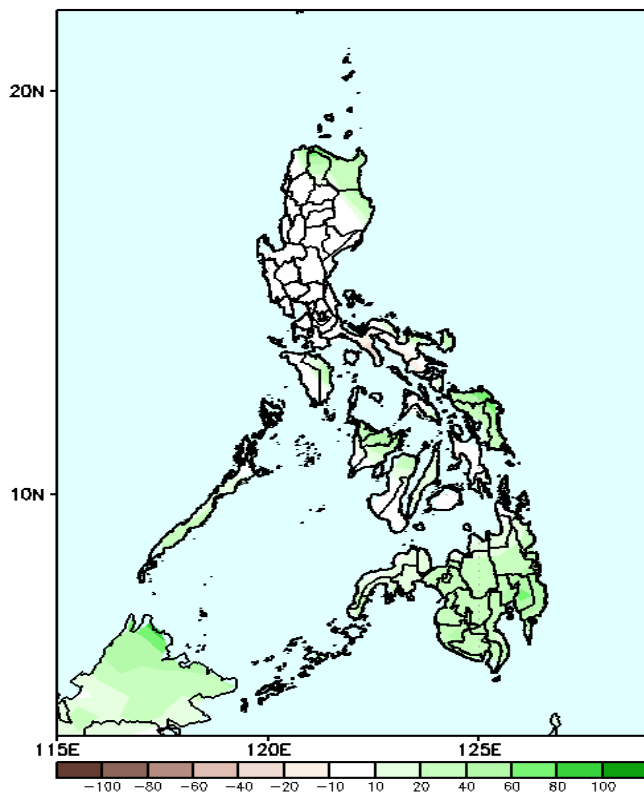
Northeast Monsoon affecting Northern Luzon, Easterlies affecting the rest of the country during the forecast period

# Precipitation Anomaly and Exceedance Probability > 25/50 mm



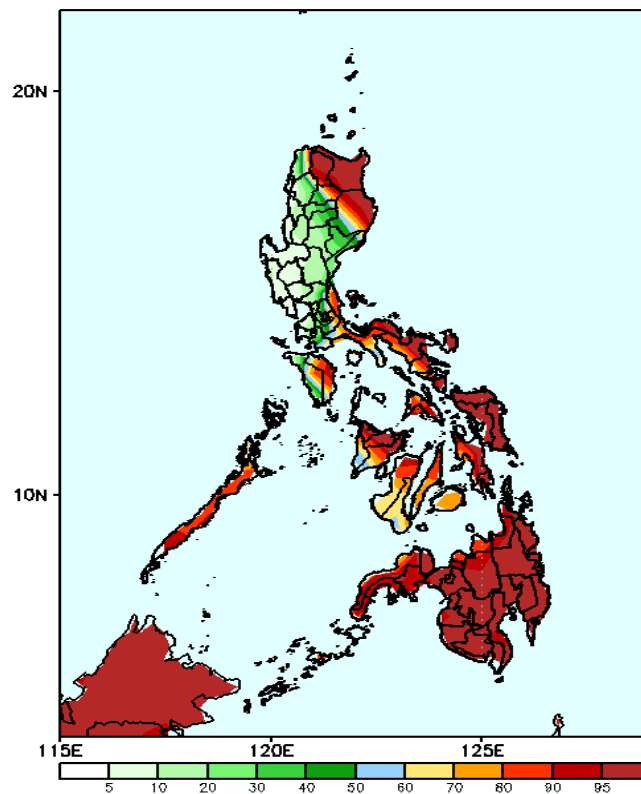
Week 1: Nov 25- Dec 01, 2024

GEFS Week-1 Precip Anomaly  
Valid: 20241127 - 20241203



Increase of rainfall of 10-60mm is most likely in in some areas in Northern and Southern Luzon and most of Visayas and Mindanao.

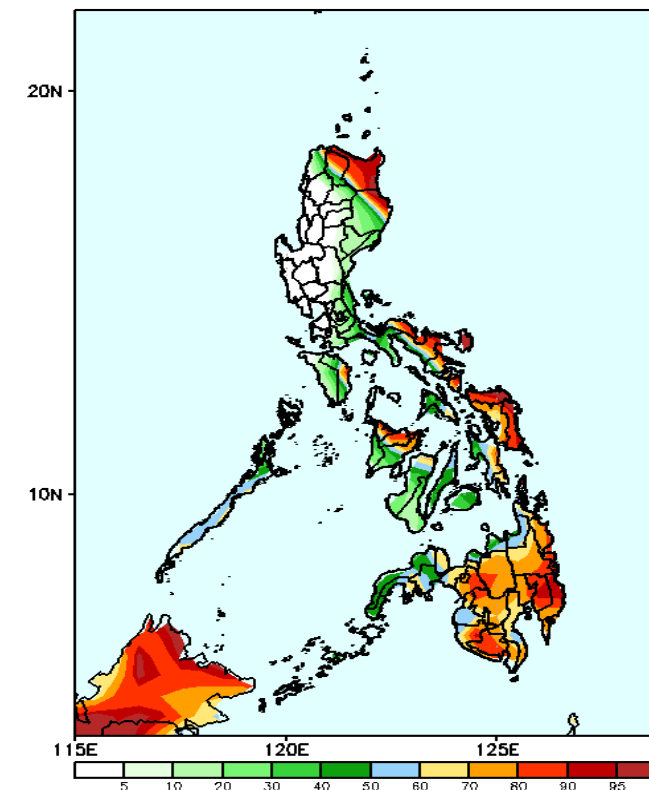
GEFS Week-1 Exceedance Prob. > 25mm  
Valid: 20241127 - 20241203



### Probability to Exceed 25mm

- High to very high over Apayao, Cagayan, northeastern part of Isabela, Quezon, Bicol Region, Palawan and most parts of Visayas and Mindanao;
- Moderate to high over the northern tip of Ilocos Norte, eastern section of CAR, Rizal, Batangas, Mindoro Provinces, and Antique.
- Low to moderate over the rest of Luzon.

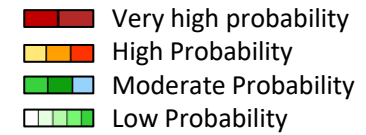
GEFS Week-1 Exceedance Prob. > 50mm  
Valid: 20241127 - 20241203



### Probability to Exceed 50mm

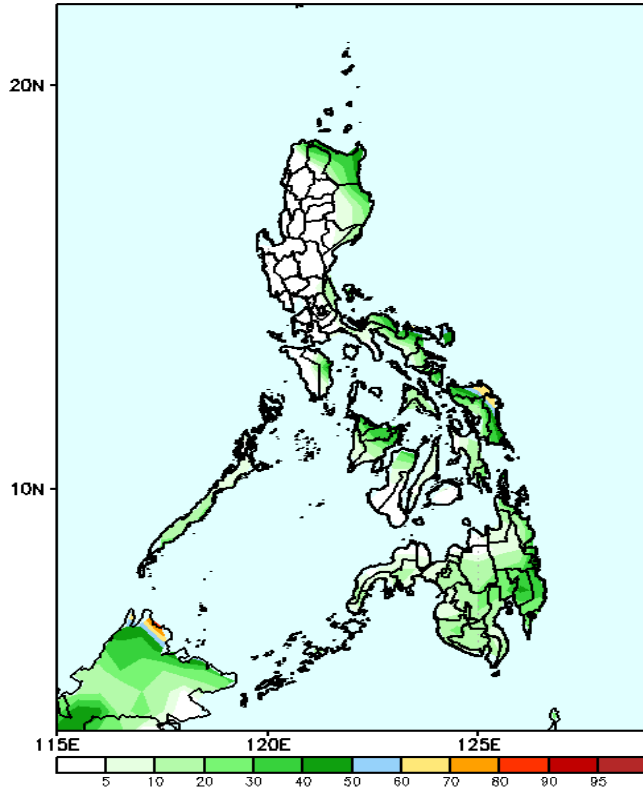
- High to very high over Batanes, Cagayan, eastern sections of Bicol region, Samar Provinces, Davao Oriental, Davao de Oro;
- Moderate to high over the northern part of Apayao, the northern tip of Ilocos Norte, the northeastern part of Isabela, the rest of Bicol Region, Aklan, Capiz, Leyte Provinces, and the rest of Mindanao;
- Low to moderate over the rest of the rest of Southern Luzon and Visayas;
- Low over the rest of Luzon.

# Exceedance Probability > 100/150/200 mm



Week 1: Nov 27- Dec 03, 2024

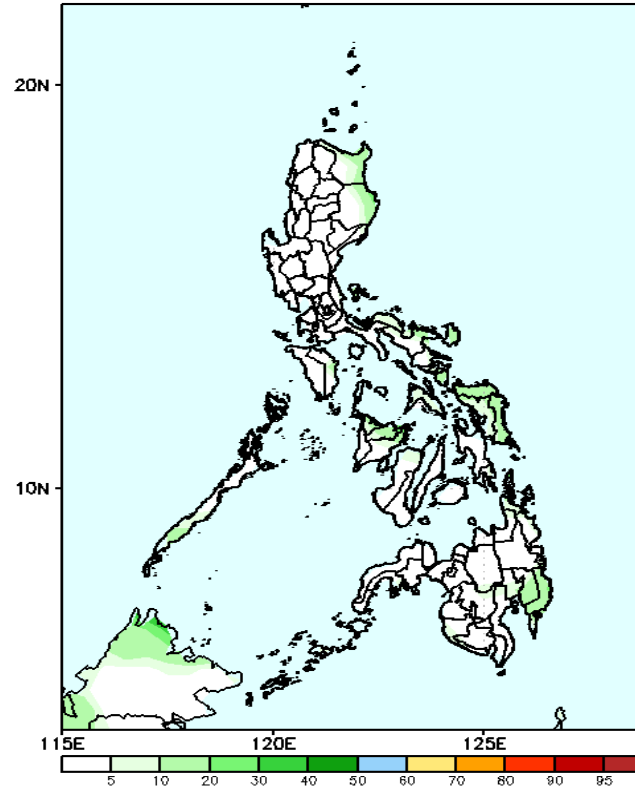
GEFS Week-1 Exceedance Prob. > 100mm  
Valid: 20241127 - 20241203



## Probability to Exceed 100mm

- Moderate to high over Northern and Eastern Samar;
- Low to moderate over the eastern section of Luzon, Visayas and Mindanao;
- Low over the rest of the country.

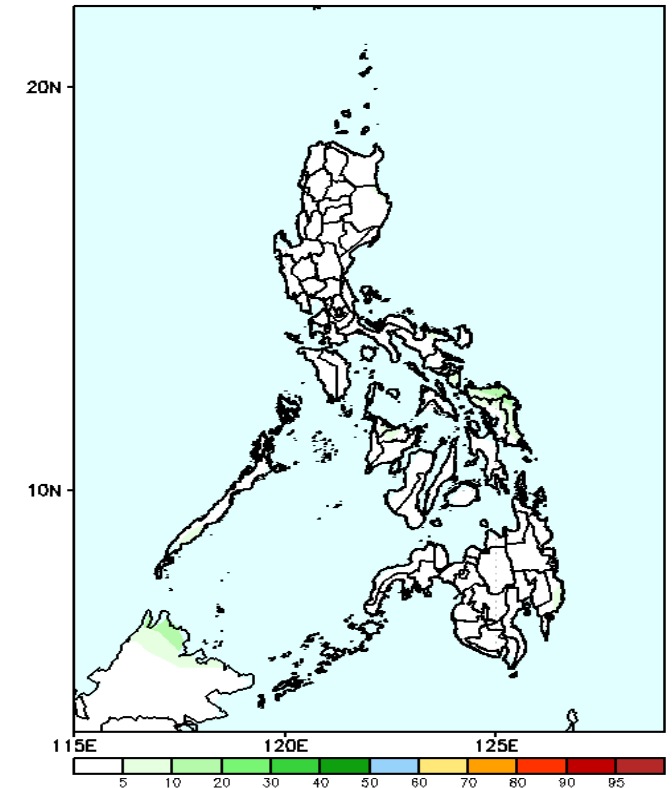
GEFS Week-1 Exceedance Prob. > 150mm  
Valid: 20241127 - 20241203



## Probability to Exceed 150mm

- Low across the country.

GEFS Week-1 Exceedance Prob. > 200mm  
Valid: 20241127 - 20241203



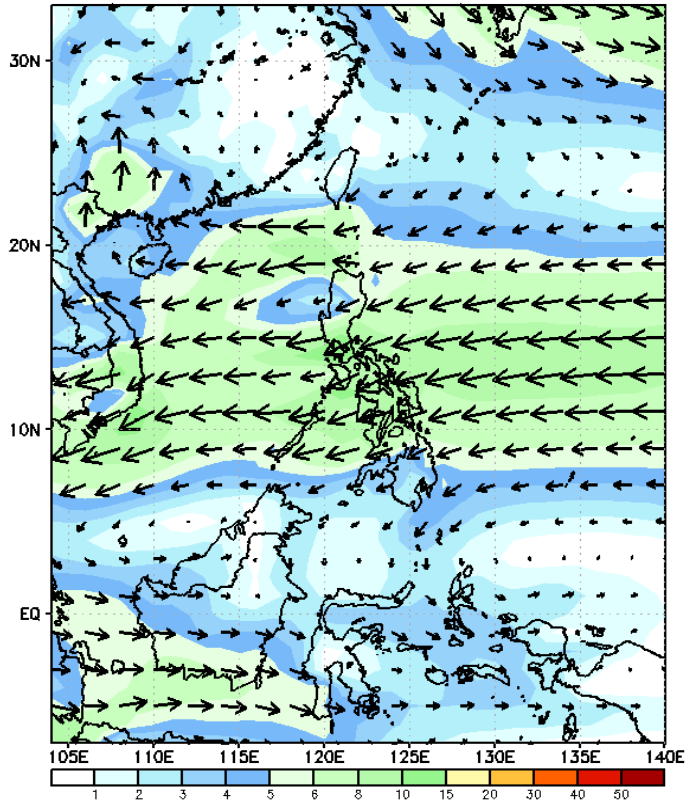
## Probability to Exceed 200mm

- Low across the country.

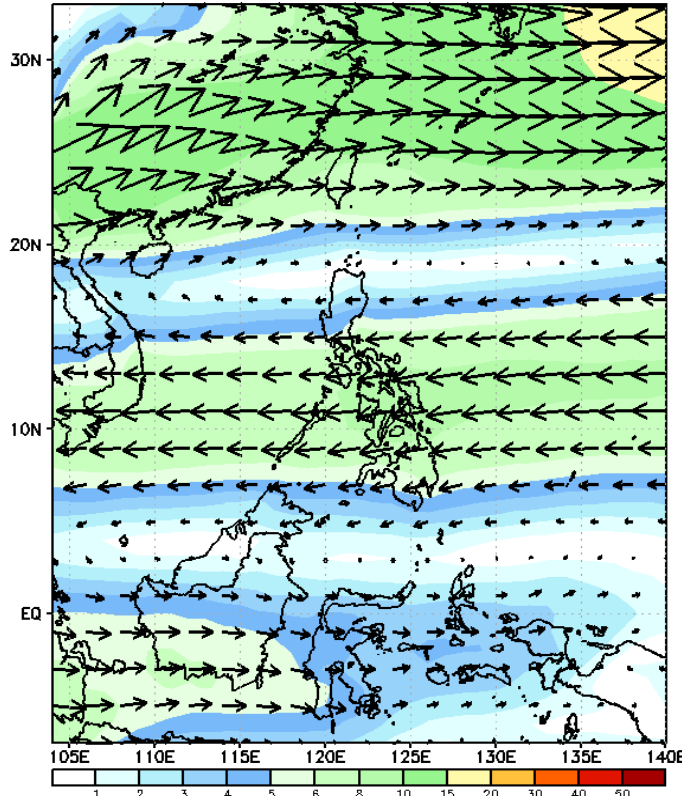
# GEFS Week-2 Wind Forecasts:

Week 2: Dec 04-10, 2024

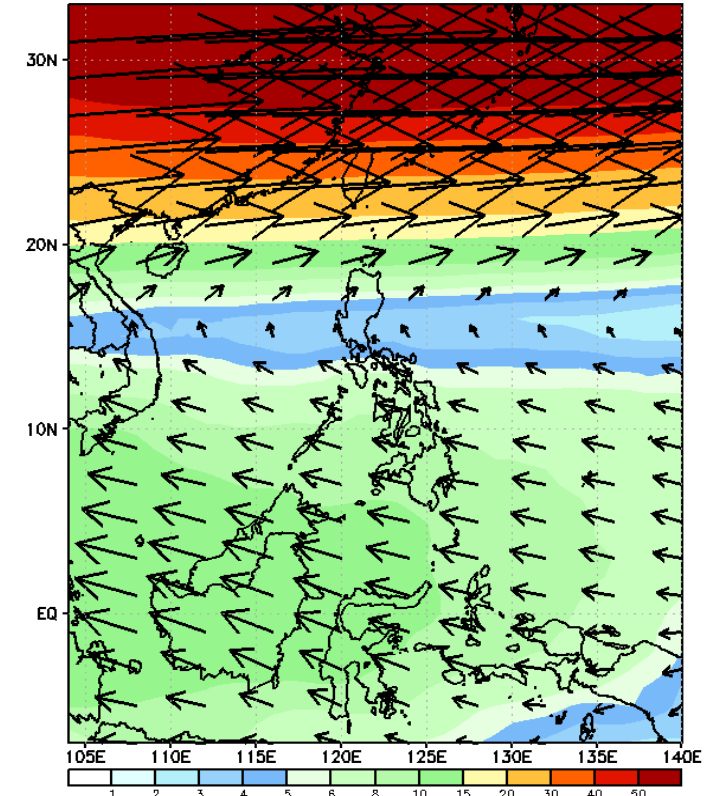
GEFS Week-2 850-hPa Wind Total  
Valid: 20241204 - 20241210



GEFS Week-2 700-hPa Wind Total  
Valid: 20241204 - 20241210



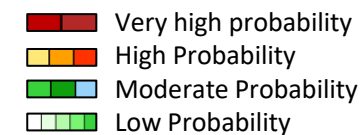
GEFS Week-2 200-hPa Wind Total  
Valid: 20241204 - 20241210



Northeast Monsoon will likely Extreme Northern Luzon. Easterlies will likely affect the rest of the country during the forecast period

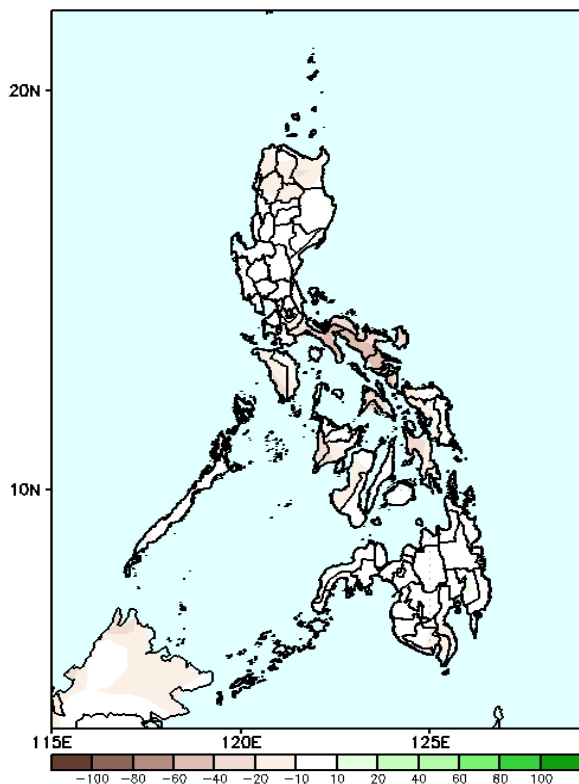


# Precipitation Anomaly and Exceedance Probability > 25/50 mm



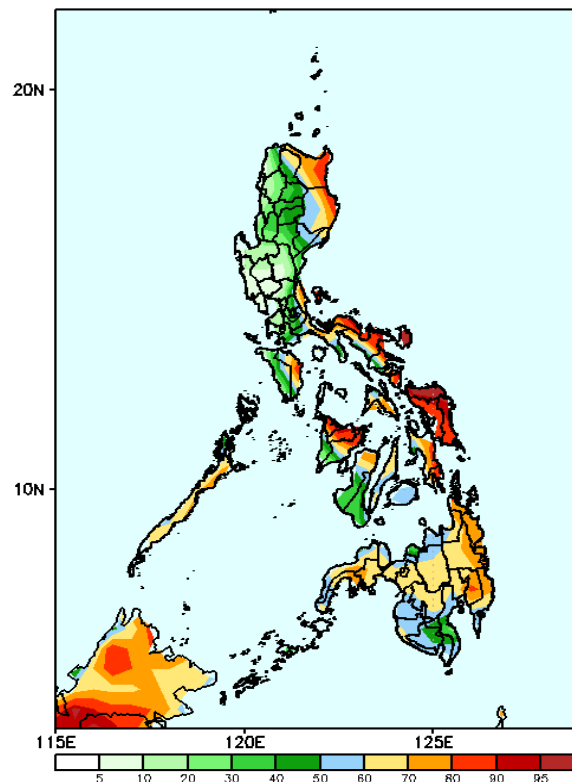
Week 2: Dec 04-10, 2024

GEFS Week-2 Precip Anomaly  
Valid: 20241204 - 20241210



Deficit of Rainfall of upto 20-60mm is most likely across the country.

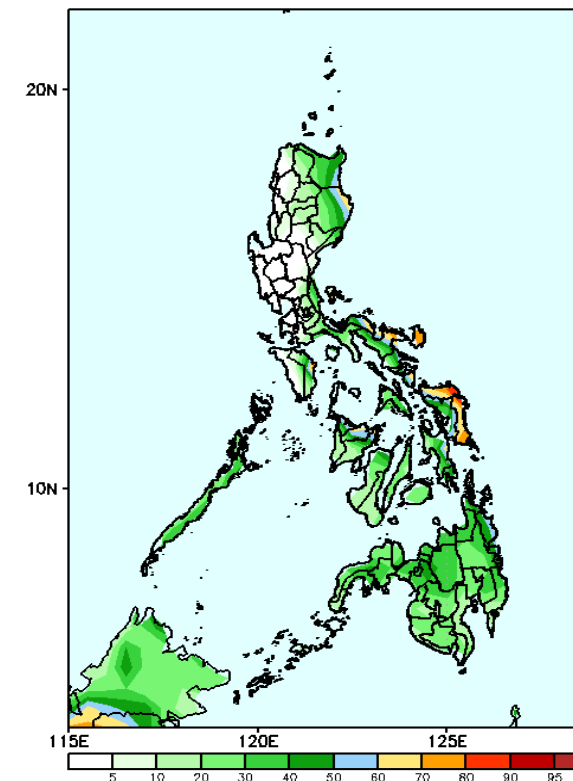
GEFS Week-2 Exceedance Prob. > 25mm  
Valid: 20241204 - 20241210



## Probability to Exceed 25mm

- High to very high over the eastern section of Bicol Region and Northern and Eastern Samar;
- Moderate to high over the rest of Eastern Luzon, Vayas and Mindanao;
- Low to moderate over the rest of Luzon;

GEFS Week-2 Exceedance Prob. > 50mm  
Valid: 20241204 - 20241210

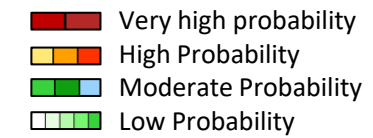


## Probability to Exceed 50mm

- Moderate to high over Eastern Luzon, Oriental Mindoro, Palawan and most parts of Visayas and Mindanao;
- Low to moderate over the rest of Luzon;

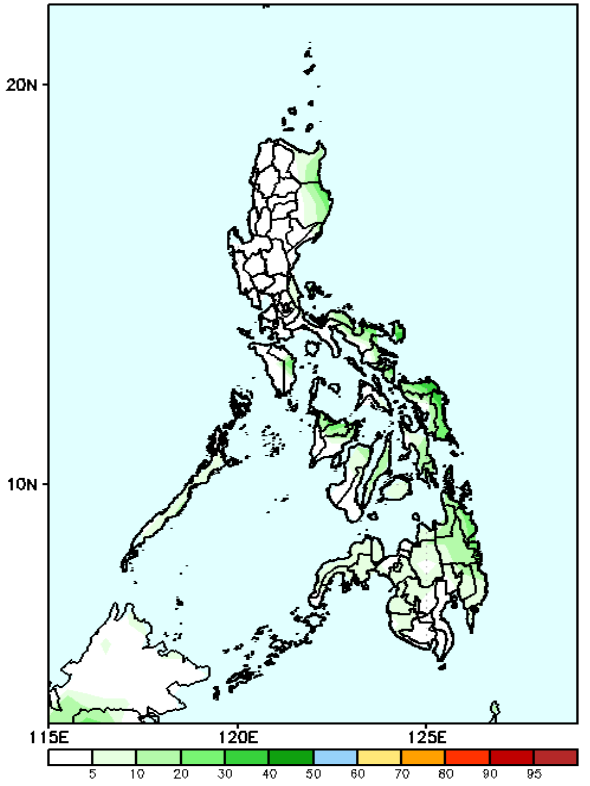


# Exceedance Probability > 100/150/200 mm



Week 2: Dec 04-10, 2024

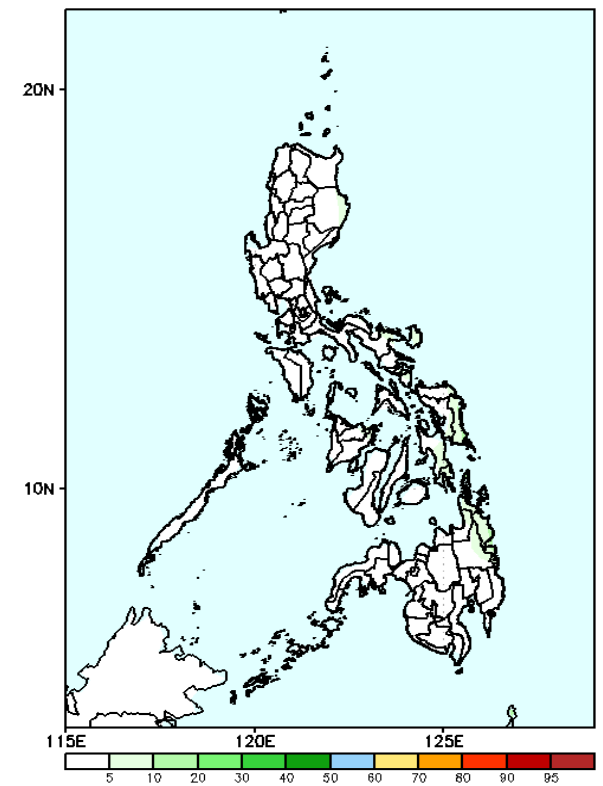
GEFS Week-2 Exceedance Prob. > 100mm  
Valid: 20241204 - 20241210



### Probability to Exceed 100mm

- Low across the country.

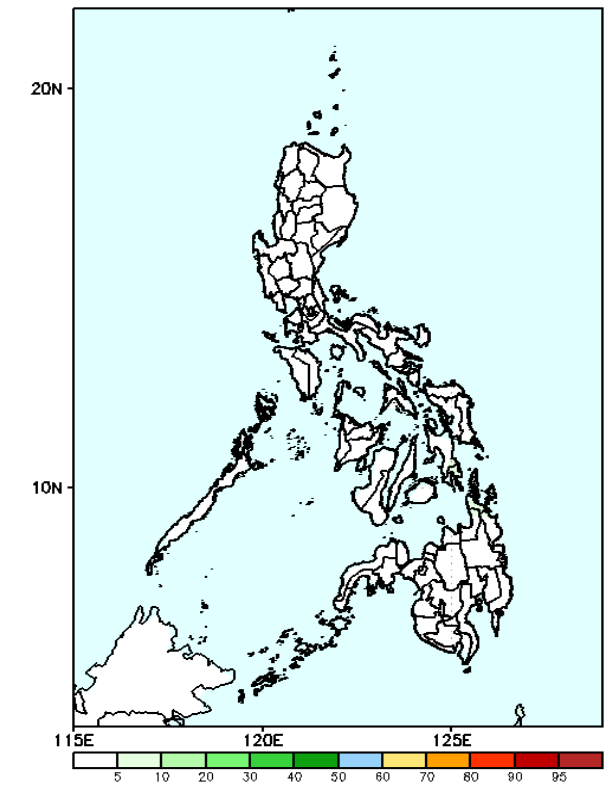
GEFS Week-2 Exceedance Prob. > 150mm  
Valid: 20241204 - 20241210



### Probability to Exceed 150mm

- Low across the country.

GEFS Week-2 Exceedance Prob. > 200mm  
Valid: 20241204 - 20241210

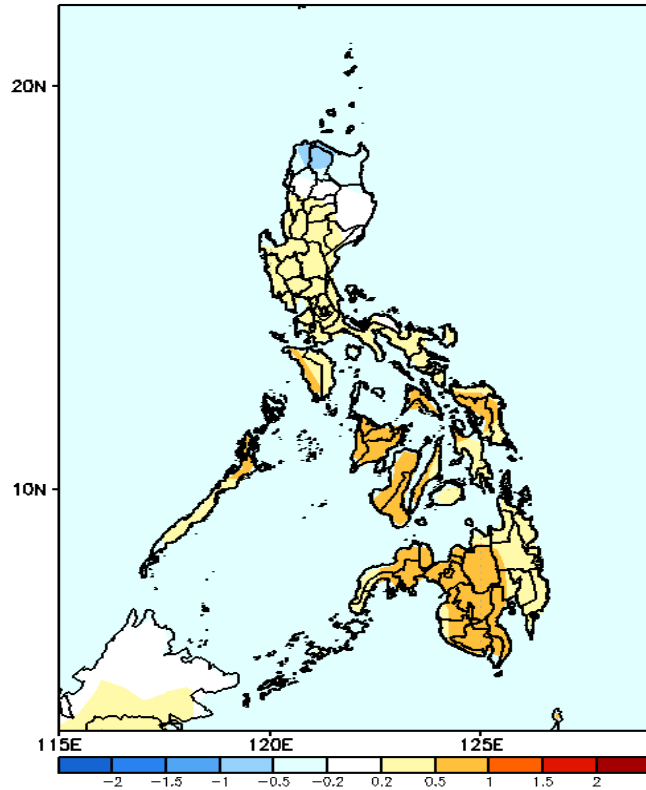


### Probability to Exceed 200mm

- Low across the country.

# GEFS Week-1 & 2 Forecasts: T2m Anomaly

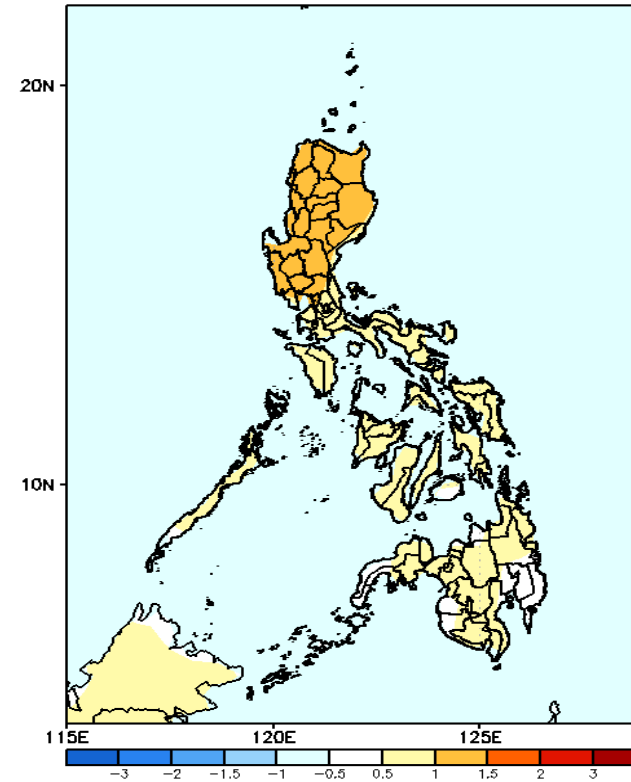
GEFS Week-1 T2m Anomaly  
Valid: 20241127 - 20241203



## 2m Temperature Week 1: Nov 27- Dec 03, 2024

Slightly warmer to warmer than average surface air temperature will likely be experienced in most parts of the country except the northern part of Northern Luzon where cooler than average surface air temperature .

GEFS Week-2 T2m Anomaly  
Valid: 20241204 - 20241210



## 2m Temperature Week 2: Dec 04-10, 2024

Slightly warmer than average surface air temperature will likely be experienced in most parts of the country.

